

# AUTOLIFT SYSTEM

## INSTALLATION MANUAL FOR ADAPTER **DUCATO** X250/290 **ALKO**

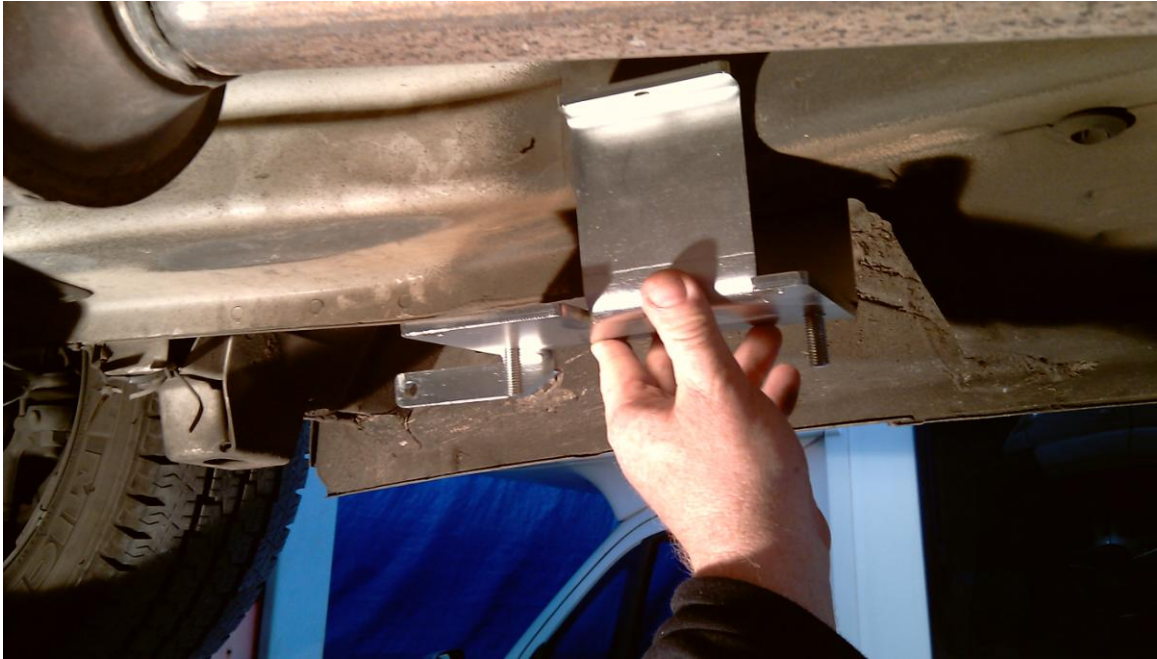
WATCH ALSO TUTORIAL VIDEO:



Please subscribe to our Youtube channel **TESA AUTOLIFT SYSTEM** and see all tutorial videos.

## Front right adapter Ducato x250

Step 1:



Put the adapter most rear possible, if necessary remove any sealing material for a perfect adherence, use a bottle jack to stop the bracket in the correct position and make the 8mm side hole then fix with the bolt.

Step 2:



Apply the clamp

**JACK WITH MOTOR TO THE OUTSIDE OF THE VEHICLE AND  
ROTATION FRONT**

## Front left adapter Ducato x250

Step 1: Use the same procedure of the right adapter

Step 2: Place the clamp between the tank and the chassis, pay attention to the pipes (in some cases it may be necessary to slightly loosen the screws fixing the tank to move it away from the chassis of 1-2 cm).



Step 3:



In rare cases it may be necessary to grind, for the correct rotation of the highjack

**JACK WITH MOTOR TO THE OUTSIDE OF THE VEHICLE AND  
ROTATION FRONT**

## Rear adapter Alko left/right

- Fix the adapter at 34cm minimum from the floor using the 10x30mm bolts.
- The adapters must be positioned and fixed perfectly specular.
- After having fixed the adapters position the link bars over, then make the 10mm holes where will be fixed the jacks.
- Then fix the highjack with the 10x70mm bolts (the bolts must tighten the adapter, the link bar and the jack together).
- The jacks can be rotate front or rear.
- Then adjust the limit switches (see installation manual).

